

COUNTY BOROUGH OF DEWSBURY  
EDUCATION COMMITTEE



OFFICIAL OPENING  
OF THE  
THORNHILL SECONDARY  
SCHOOL

COUNTY BOROUGH OF DEWSBURY  
EDUCATION COMMITTEE



Official Opening  
OF THE  
Thornhill Secondary School

BY  
ALDERMAN FRED FOX, J.P.

Wednesday, 25th November, 1964

*Chairman:*  
Councillor T. EVERS, M.B.E.,  
*Vice-Chairman of the Education Committee*



*Alderman FRED FOX, J.P.*

COUNTY BOROUGH OF DEWSBURY  
EDUCATION COMMITTEE 1964—1965

\**Chairman*: Alderman F. Fox, J.P.

\**Vice-Chairman*: Councillor T. Evers, M.B.E.

\*The Mayor: Councillor A. Wilkinson, J.P.

*Alderman W. A. Greenwood, J.P.	Alderman F. W. Craven
*Alderman R. S. Roberts, J.P.	*Councillor P. Evers
*Councillor Mrs. V. Ferrari	*Councillor Miss B. Goldthorpe
*Councillor H. Oldroyd	*Councillor Mrs. M. Smith
*Councillor J. Walsh	Mrs. M. Robshaw
*Rev. E. C. Henderson, B.D.	*Rev. G. Hinchliffe
*Rev. G. H. Taylor, M.A.	*Rev. C. G. H. Spafford, M.A.
*Mr. E. Barber	Mr. W. F. Beckwith
*Mr. H. Heede	

\*Members of the School Governing Body.

*Additional School Governors*

Alderman K. C. Howe	Councillor Mrs. A. Cockcroft
Councillor H. M. Nunns, J.P.	Councillor W. Weir, J.P.
Dr. G. L. Isles, B.Sc., A.R.I.C.	Mr. R. Ferrari
Mr. G. K. Dyson	Mr. K. Garwell
Mr. J. T. Kenyon	

A. Norman James, Solicitor, *Town Clerk*

A. G. Beckett, A.R.I.B.A., Dip.T.P., A.M.T.P.I.,  
*Borough Architect and Planning Officer.*

J. D. Ridge, B.A., *Chief Education officer.*

ORDER OF PROCEEDINGS

Councillor T. EVERS, M.B.E.  
will take the Chair.

SCHOOL HYMN.

DEDICATION

by

Rev. C. G. H. SPAFFORD, M.A.,  
*Rector of Thornhill.*

THE SCHOOL CHOIR

*"Non Nobis Domine".....Quilter*  
*"How beautiful are the feet" (Messiah).....Handel*  
*"Song for a festival".....Dyson*

OFFICIAL OPENING

by

Alderman FRED FOX, J.P.

Presentation to the Opener on behalf of the Main Contractor.

VOTE OF THANKS.

Proposed by The Mayor, Councillor A. Wilkinson, J.P.  
Seconded by Alderman R. S. Roberts, J.P.

THE NATIONAL ANTHEM.

## SCHOOL HYMN

### PRAISE MY SOUL THE KING OF HEAVEN

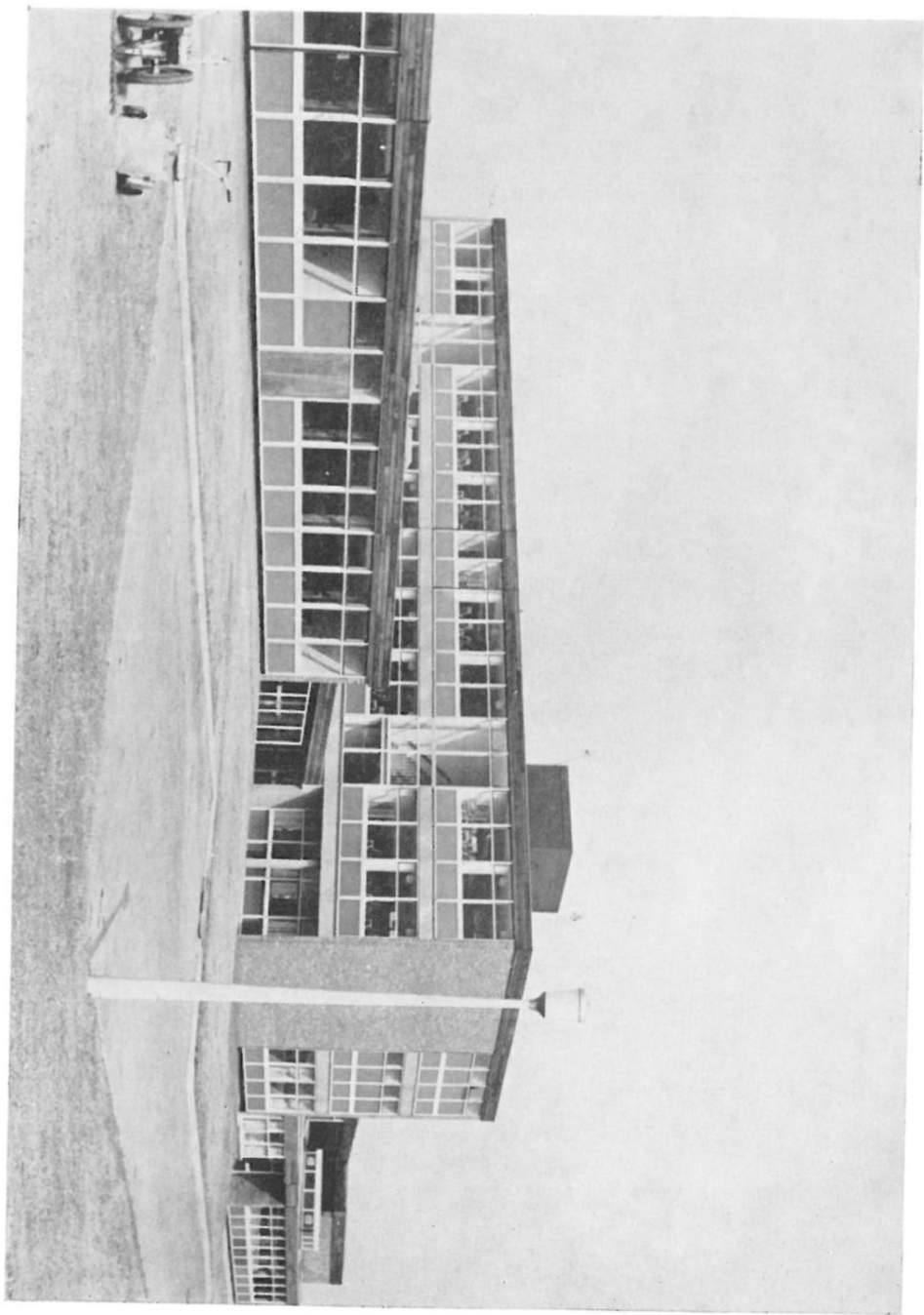
Praise, my soul, the King of Heaven,  
To His feet thy tribute bring;  
Ransom'd, heal'd, restored, forgiven,  
Evermore His praises sing;  
Alleluia! Alleluia!  
Praise the everlasting King.

Praise Him for His grace and favour  
To our fathers in distress;  
Praise Him still the same as ever,  
Slow to chide, and swift to bless;  
Alleluia! Alleluia!  
Glorious in His faithfulness.

Father-like, He tends and spares us,  
Well our feeble frame He knows;  
In His hands He gently bears us,  
Rescues us from all our foes;  
Alleluia! Alleluia!  
Widely yet His mercy flows.

Angels in the height, adore Him;  
Ye behold Him face to face;  
Saints triumphant, bow before Him,  
Gather'd in from every race;  
Alleluia! Alleluia!  
Praise with us the God of grace.

*Henry Francis Lyte*



The Thornhill Secondary School, submitted as a 4 form entry project for 600 pupils, was finally given a place in the 1961-62 major building programme as a 4 form entry project omitting accommodation for three 5th forms. At the present time the school is amply capable of meeting the demand for places from the Thornhill area and will continue for some time to meet the increasing demands arising from the housing development in the area. The planning of the school has taken account of the possible need in the future of yet further provision which may call for additional accommodation for a further three 5th forms. To that extent the present school may be regarded as a first instalment.

It is gratifying that at a time when educational thought is turning increasingly to the problem of matching educational opportunity to the maturing needs of secondary pupils, this new school offers a wide range of facilities and generous accommodation for an imaginative approach towards finding a solution.

As an annexe within the school grounds, the Thornhill Youth Club has been established in furtherance of the declared policy of the Committee. The annexe provides visible evidence that the Youth Service is an integral part of the Education Service, and the admirable facilities of the school are available for members of the youth club who wish to take a serious part in organised activities. It is hoped that the young people will find here an incentive to improve their skills and acquire new interests.

The establishment of the new secondary school releases the old premises for adaptation as a 2 form entry Infant and Junior school. This latter project has been approved for inclusion in the 1965/66 major building programme. Planning is proceeding with a view to a start on the work in the early part of the financial year 1965/66.



*The Hall*

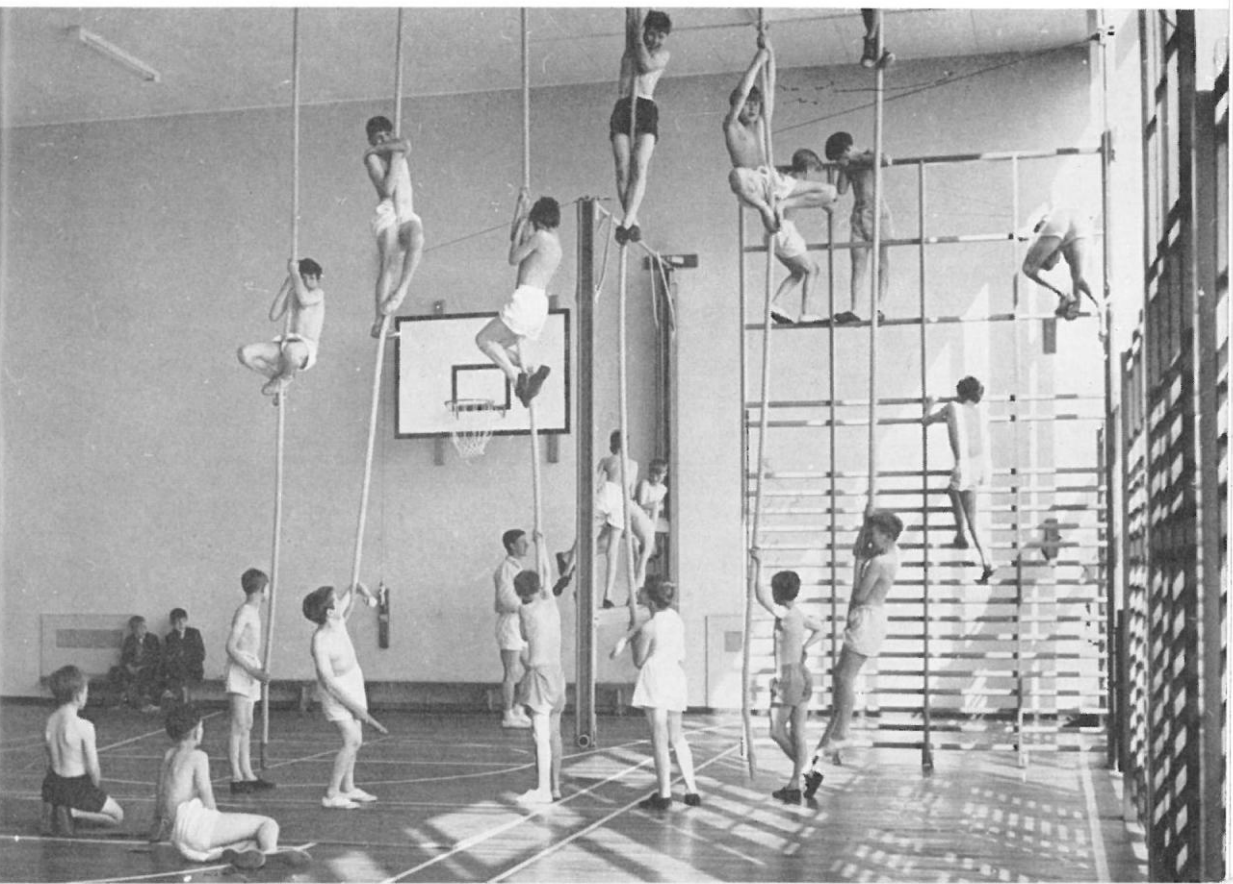
*A Courtyard*





*The Library*

*The Gymnasium*



## ARCHITECT'S NOTES

The school is situated between Valley Drive, Edge Lane, St. Michael's Mount and Glebe Gate, the main entrance being from Valley Drive with pedestrian access from Edge Lane and Glebe Gate.

The sloping site had no points of interest which dictated the siting of the school but was visually obstructed by overhead power cables and therefore the school was designed around a series of courtyards to create areas of interest within the school itself. It was situated within close proximity to the overhead cables to enable the playing field areas to be laid out in the 'open' area of the site to the north.

The school comprises three units, each on different levels due to the sloping site, with groups of rooms of related activities forming each unit, *i.e.*, practical block, classroom block and communal block. These units are strongly linked together by means of the courtyard areas with the three storey classroom block as the dominant element.

The circulation is direct and clear, thus assisting movement of classes throughout the school which is designed initially for 510 pupils. As it may become necessary to extend the school at a later date, a position for the additional rooms for 90 pupils has been reserved, so that it can be built without destroying or affecting the composition of the scheme.

The Practical Block comprises the science laboratories, technical drawing, craft, metalwork, woodwork, needlework, housecraft and art rooms with additional toilet and cloakroom accommodation to that provided in the main classroom block, and is designed around a 60 feet square courtyard which is a delightful sun trap with a pool, seats, trees and various plants and shrubs.

The covered ways link the practical block to the three storey block forming a larger grassed courtyard. The ground floor of this block consists of the main toilets and cloakrooms, the geography room and the staff room and toilets. The first floor is given up to classrooms, whilst the second floor has classrooms, the library and additional toilets for both sexes with a central corridor linking the two staircases together. This block is orientated on the north-south axis to avoid glare from the sun during teaching hours.

To the east of this block there is another courtyard with the music rooms to the north, the administration rooms and main entrance hall to the south and the assembly hall to the east. The feature of this courtyard is the tiled mural on the west wall which is 60 feet long and 9 feet high, readily seen from the assembly hall and the corridor to the north and the entrance hall to the south.

The communal block comprises the assembly hall, dining room, kitchen, gymnasium, changing rooms and boiler house.

The dining room is separated from the assembly hall by a removable screen, which enables it to accommodate the overflow of large audiences which cannot be housed by the hall at certain functions.

The gymnasium is at a lower level to the assembly hall and is adjacent to the stage, the space under the stage being used for stores, whilst the stage itself by use of a sliding folding partition can be used as an observation platform for gym displays.

The changing rooms are sited so that they are readily accessible to the playing fields, the gymnasium and the stage, whilst the tennis courts are closely related to the gymnasium.

The 3 storey block is of reinforced concrete construction but the single storey blocks are steel framed construction. Due to the presence of old mine workings, the structure had to be constructed with 1" wide articulation joints approximately every 60 feet to allow for differential settlement. This site condition enforced the design of the school in units and this, together with the bare nature of the site gives added point to the courtyard theme of the school.

The private Architects were appointed in May, 1960, and final plans were approved by the Minister in November, 1961. Tenders were invited in the same month and in February, 1962, the fixed price tender submitted by Messrs. Marshall & Rushworth Ltd., of Elland, was accepted in the sum of £230,241 2s. 8d.

Work started in March, 1962, and the school was handed over in May, 1964.

Nett Cost (buildings and playgrounds, including £10,550 0s. 0d. abnormal costs due to settlement precautions)	.. .. .	£206,057	8s. 3d.
Additional Costs (playing fields, roads, paths, site works, etc.)	.. .. .	£24,183	13s. 5d.
Gross Cost	..	<u>£230,241</u>	<u>1s 8d.</u>

No. of pupils—510.

No. of places for cost purposes—610.

Nett cost per place—£337 15s. 11 $\frac{3}{4}$ d.

Area per place—72.44 sq. ft.

Nett cost per square foot—93s. 3d.

## HEADMASTER'S IMPRESSIONS

An early impression, very quickly gained, was that the boys and girls took an immediate liking to the building and settled down happily in it. The staff too are enjoying the splendid teaching facilities set in such a beautiful environment.

The architect has ingeniously yet economically grouped communal, teaching and administrative blocks around an open paved courtyard which, broken by lawns and flower beds, gives light and grace to the whole area.

The hall seats the whole school, four hundred strong; the dining room adjoining serves two hundred and fifty in two sittings. The gymnasium looks out on to hard tennis courts which are also used as playgrounds. Changing rooms are conveniently placed to serve both gymnasium and playing fields which are equipped for soccer, hockey, cricket and track and field athletics.

In the teaching block are fourteen classrooms centred round a particularly fine library. Two covered ways lead from the main block to the one-storey practical block. Here, science laboratories, wood and metal workshops, domestic science, needlework and art and craft rooms have been built around an open courtyard giving an open and pleasant aspect from any point.

The house telephone system assists considerably in making administration convenient and easy.

This fine building should serve as an inspiration to the people of Thornhill for a very long time to come.

## STAFF

---

*Headmaster*—Mr. A. S. McAllister, B.A.

*Deputy Head*—Miss D. Thompson.

*Heads of Departments—*

Mr. E. Barber (Mathematics)

Mr. D. Longbottom (Science)

Mr. T. B. Mitchell (English)

Miss B. Bolton

Mr. D. Blamires, B.A.

Miss J. Gaunt

Mrs. N. Gregory

Mr. J. Gunson

Mrs. H. Hurst, B.A.

Mr. P. Kitson

Miss J. Oldroyd

Mr. J. Riley

Mr. Q. M. Siddall

Mr. T. M. Waite

Mrs. S. Wilcock

*School Secretary*—Mrs. K. M. Ashton.

*ARCHITECTS:*

Messrs. Firth, Son & Blackburn, A/A.R.I.B.A.  
in co-operation with  
The Borough Architect and Planning Officer

*QUANTITY SURVEYORS:*

Messrs. W. Macfarlane, F.R.I.C.S.

*STRUCTURAL CONSULTANTS:*

Messrs. W. V. Zinn & Associates

*ELECTRICAL AND MECHANICAL ENGINEERING CONSULTANTS:*

Messrs. Pashler & Partners

*GENERAL CONTRACTOR:*

Messrs. Marshall & Rushworth Ltd.