

Work Experience Launch



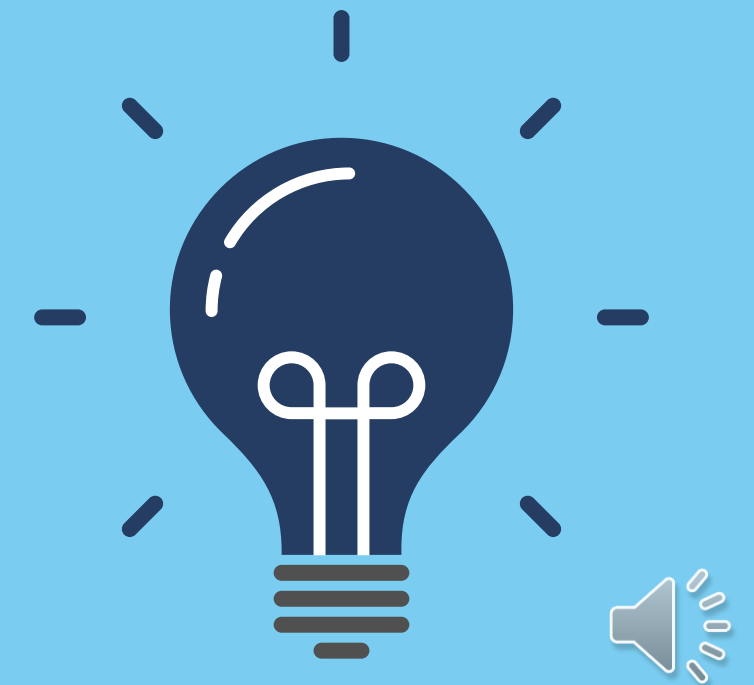
successful futures 
NYBEP education and business in partnership



What do we do?

Everything we do is aimed at helping young people to acquire the skills and knowledge that will prepare them for the workplace, inspire them to plan for and achieve a successful future.

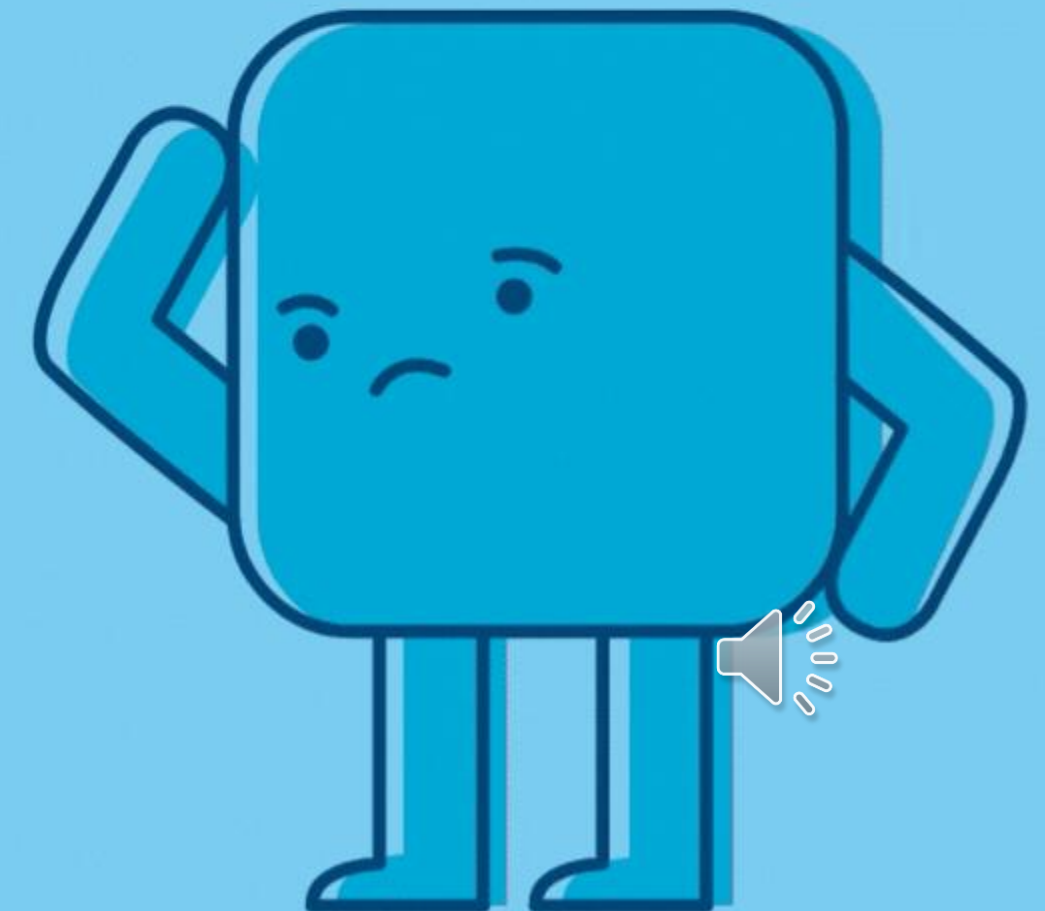
Work Experience plays a big part in this process.



Why is work experience important?



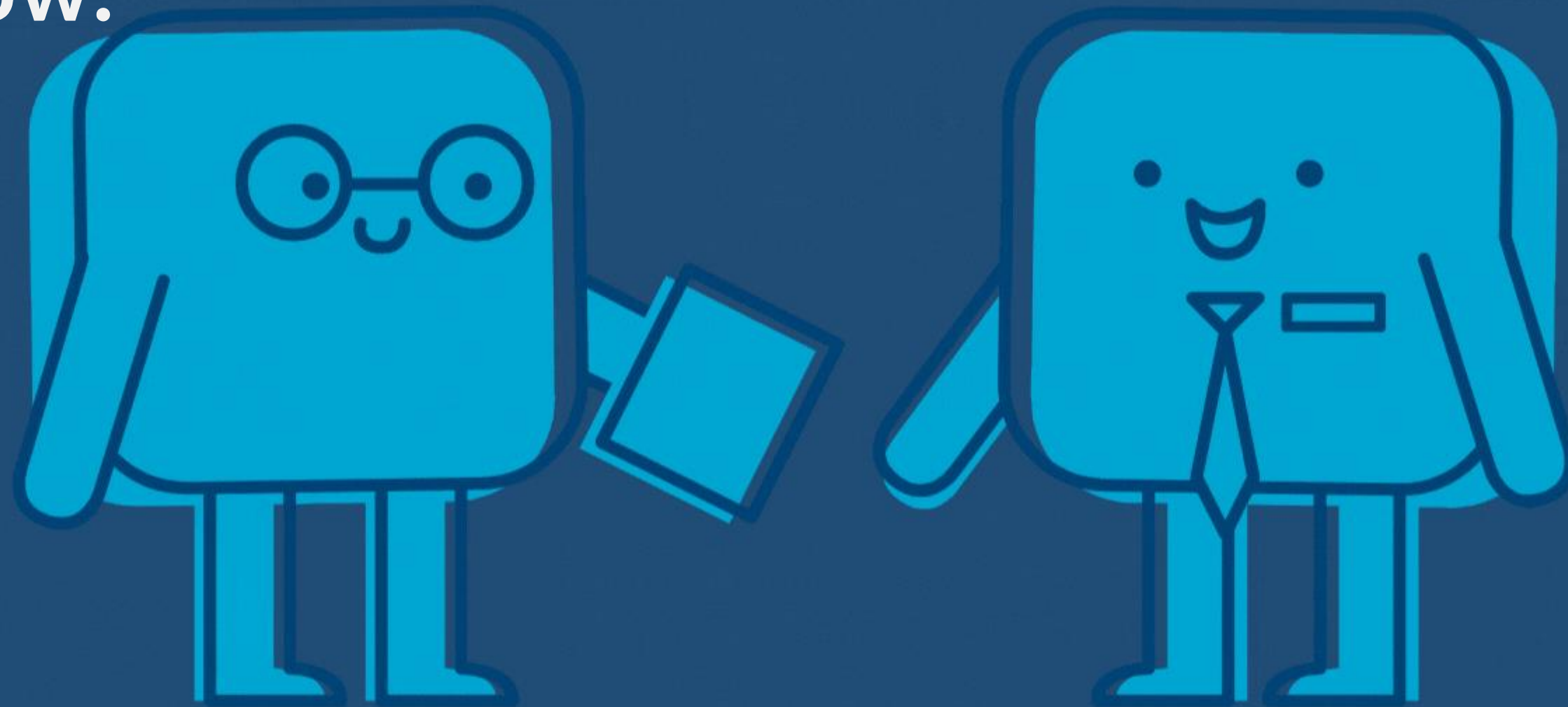
- Provides you with an insight into the world of work.
- Gives you an opportunity to showcase and develop your skills and motivation as an individual.
- Allows you to form an outline of the career path you may choose.
- Enables you to build a foundation relationship with a local employer and make a lasting impression.



What is an Experience of the workplace?



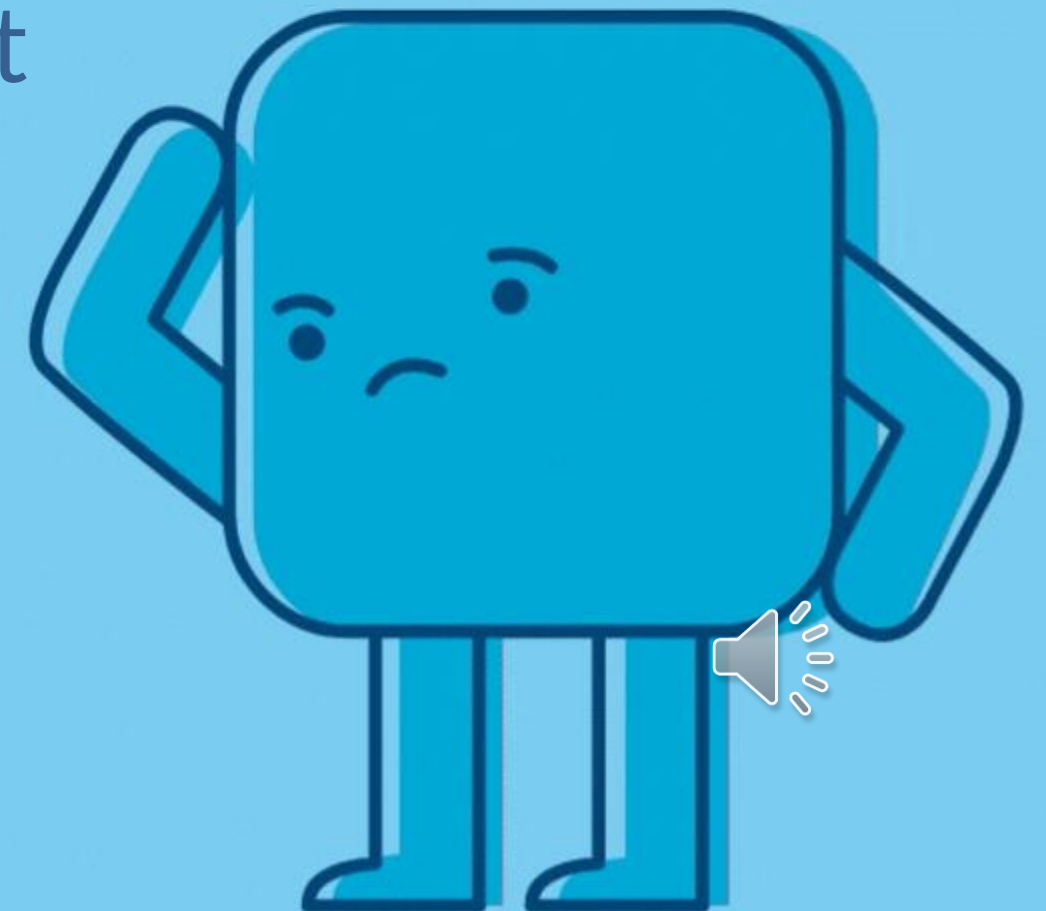
Preparing you for jobs that do not exist, to use
technology not invented and solve problems we do not
yet know!



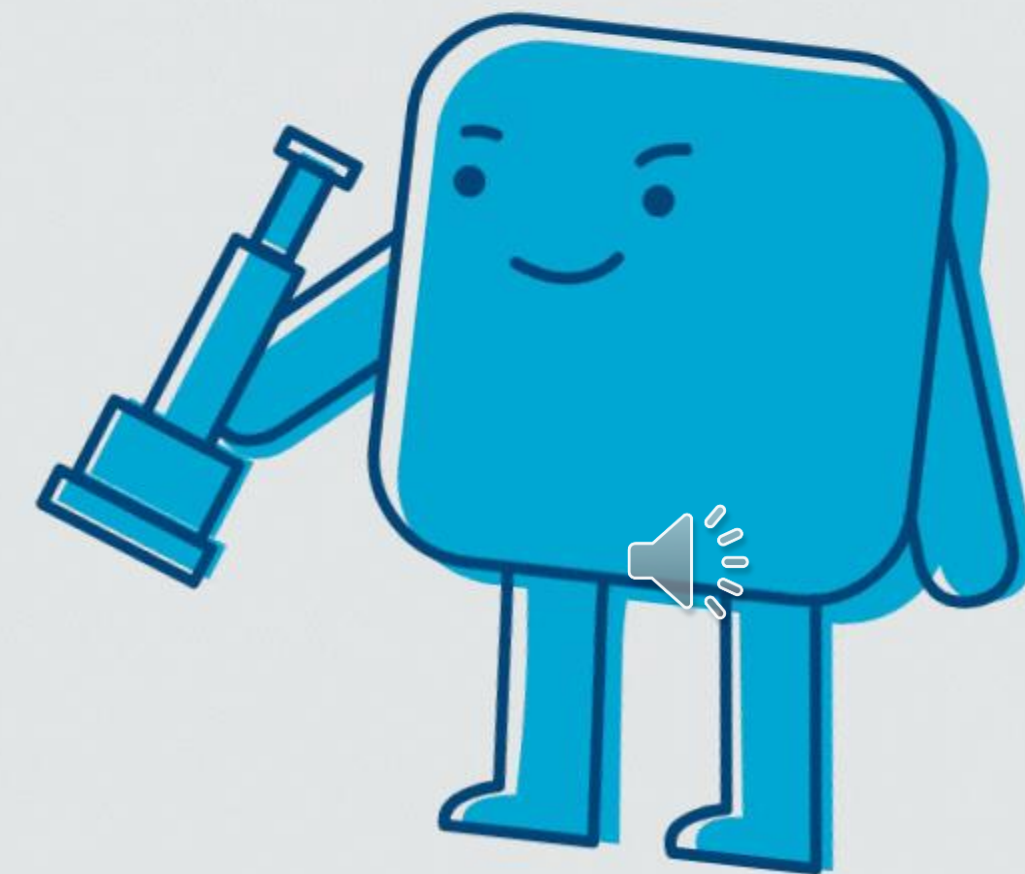
Understanding the range of opportunities



- Do you understand what employers have to offer and what they are looking for?
- Challenge any stereotypes or misconceptions about sectors, what a job involves etc.
- If you had to describe a job in IT what would you think of?
- Would you think of this



Let's see what careers are out there...



Tips for finding your placement

Do your research

Research using the internet or look on your high street for employers based nearby who might give you a placement.



Don't be shy!

Emailing, telephoning and visiting employers in person. Research the company and find the name of the key person to ask for.

Word of mouth

Talk to friends, parents, family members and enquire if they can help out or support. Everyone knows someone!



Tips for finding your placement

Register

Register on volunteer, apprenticeship and job websites to search for companies and contact details.

Networking

Active networking in person and online using social media sites like Twitter, Facebook and LinkedIn to follow companies.

Ask your teachers

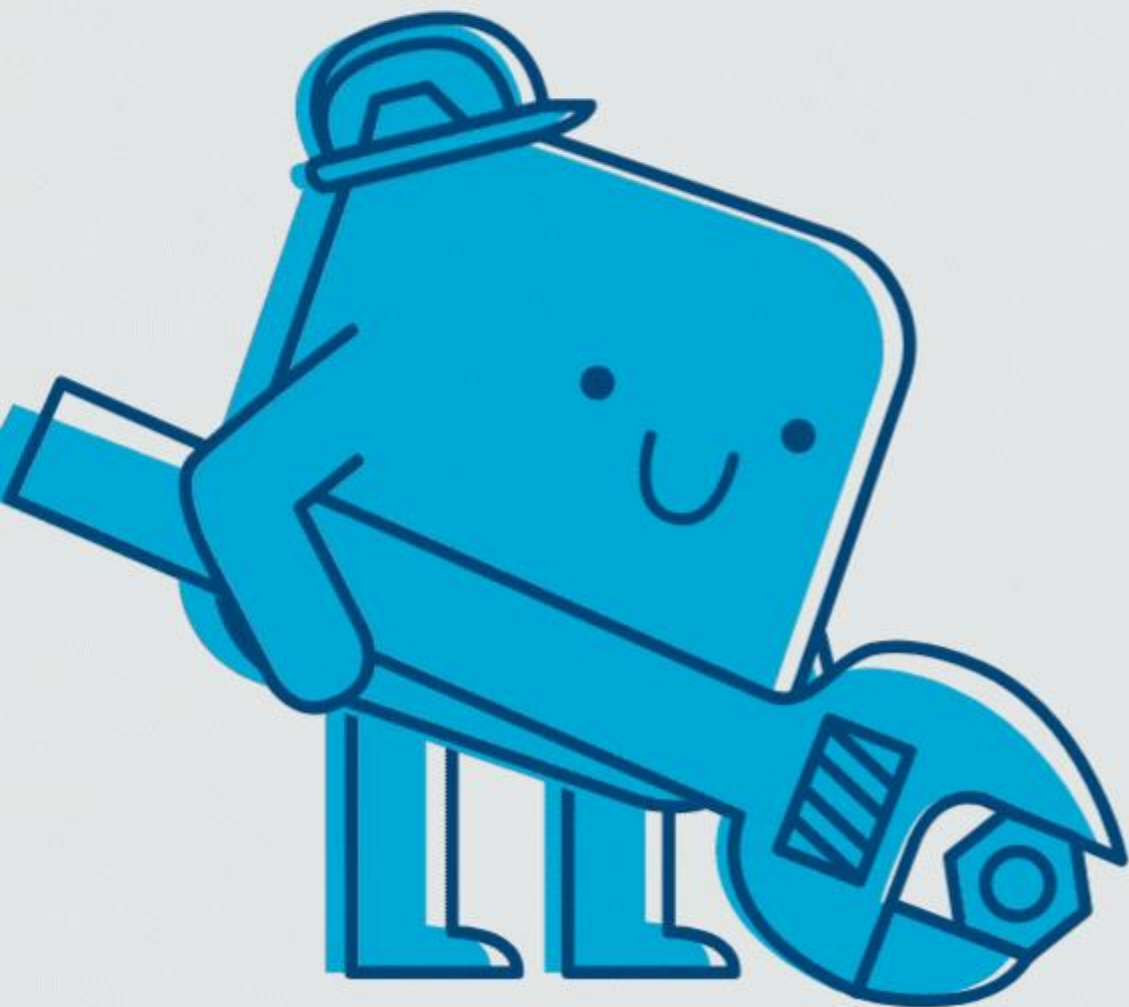
Talk to your School Teachers and ask them if they can think of anyone they might know or may have taken past placements.



Things to consider checklist



- ✓ How will you get there? What will you be doing?
- ✓ Employers Liability Insurance
- ✓ Out of area placements
- ✓ Will you need a preplacement interview?
- ✓ Employers are giving up their time to invest in you!



Key dates to REMEMBER!



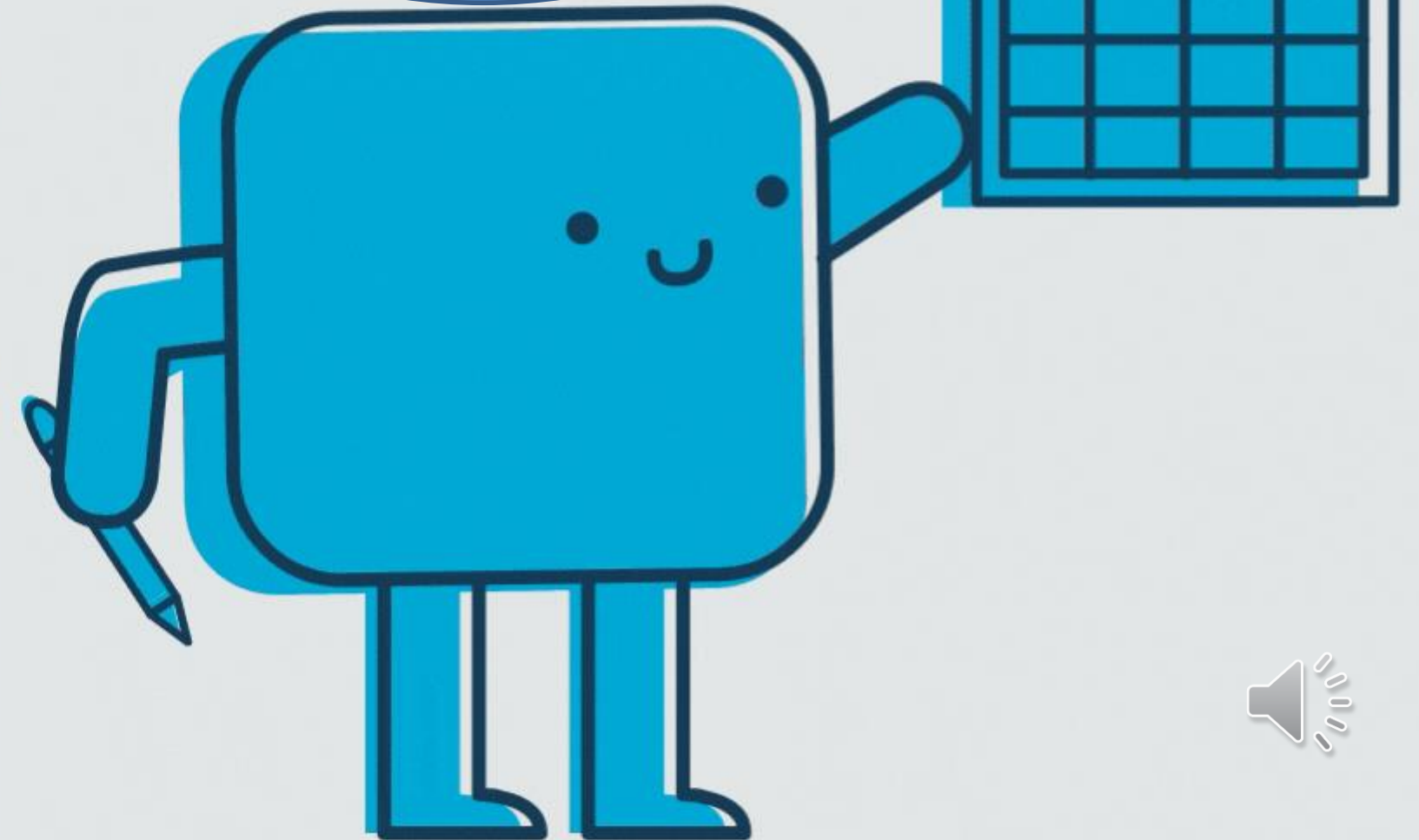
You must have downloaded the app and
have logged in by:

Friday 2nd February

You must have found your own
placement by **1st March 2024**
work experience dates:

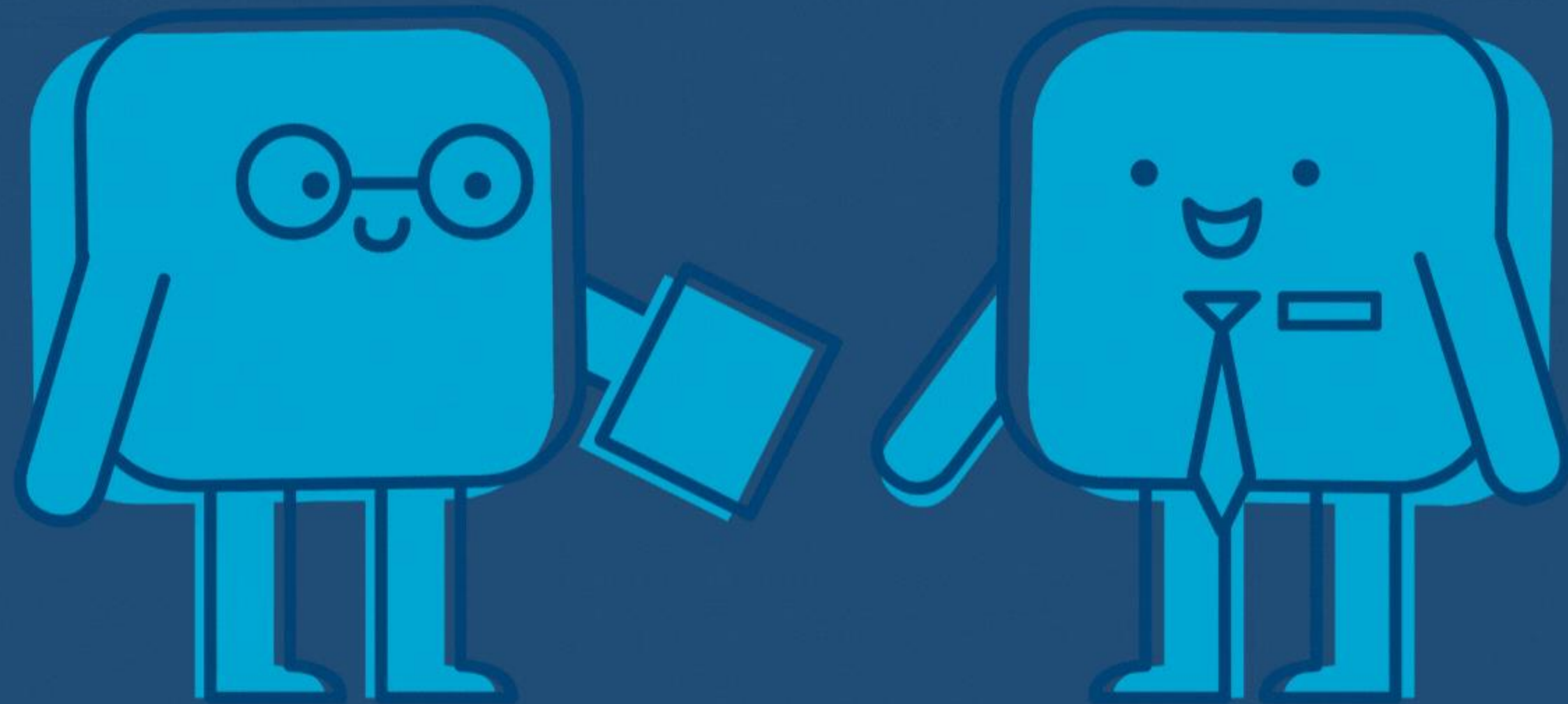
8th – 12th July 2024.

PLEASE BE AWARE THE
DATES ON THE
POWERPOINT ARE
CORRECT – THE
VOICEOVER DATES HAD
TO BE CHANGED.



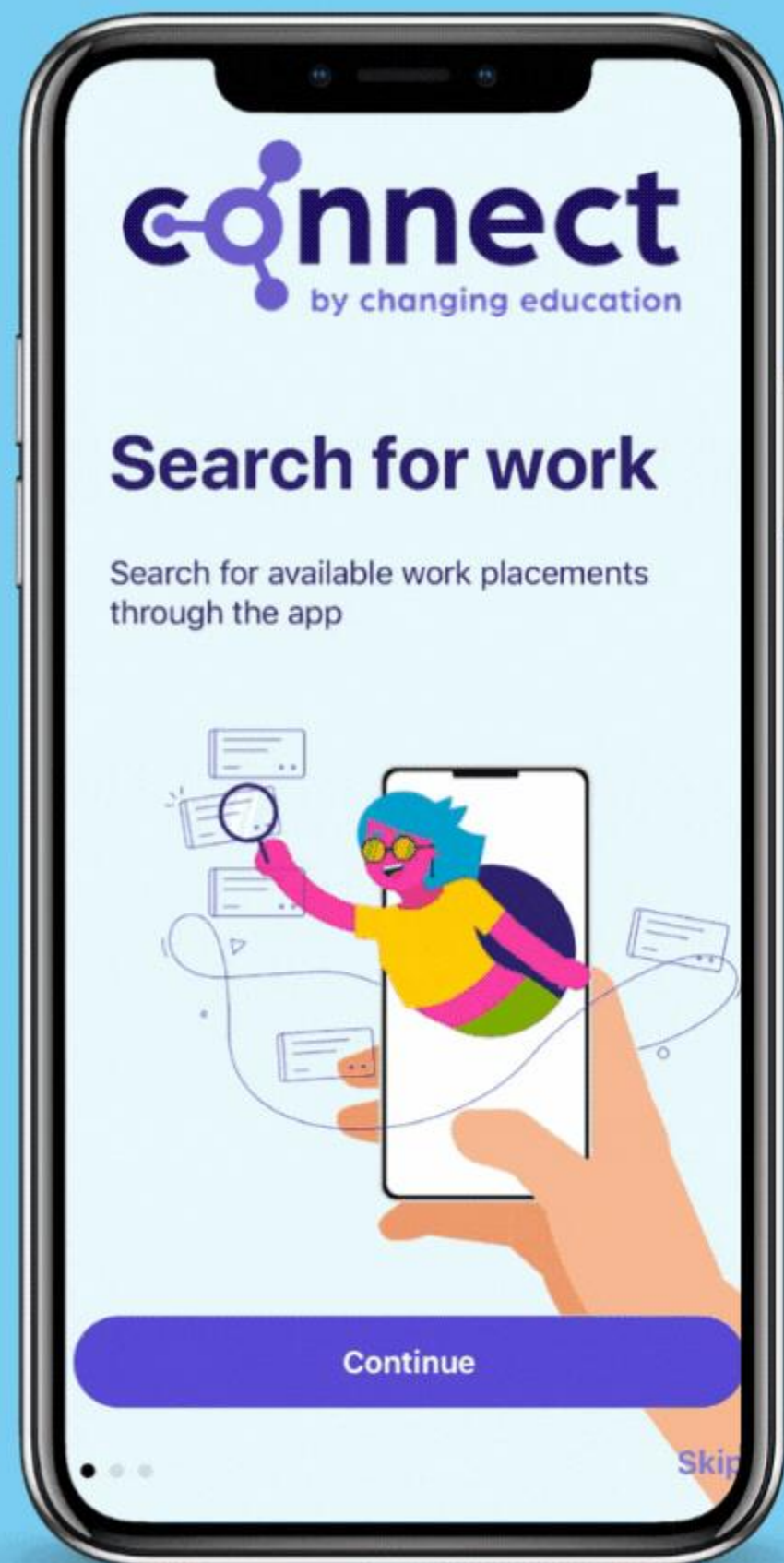


What do I do once I have found my own placement?

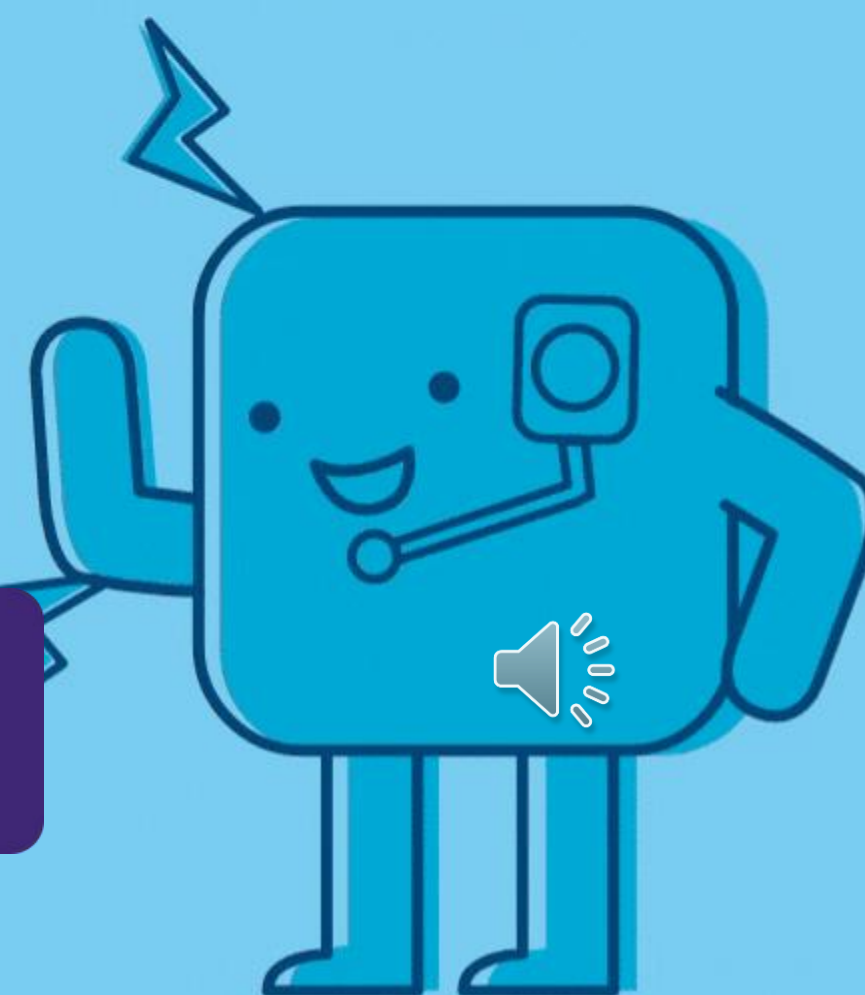




Step 1: Download the app



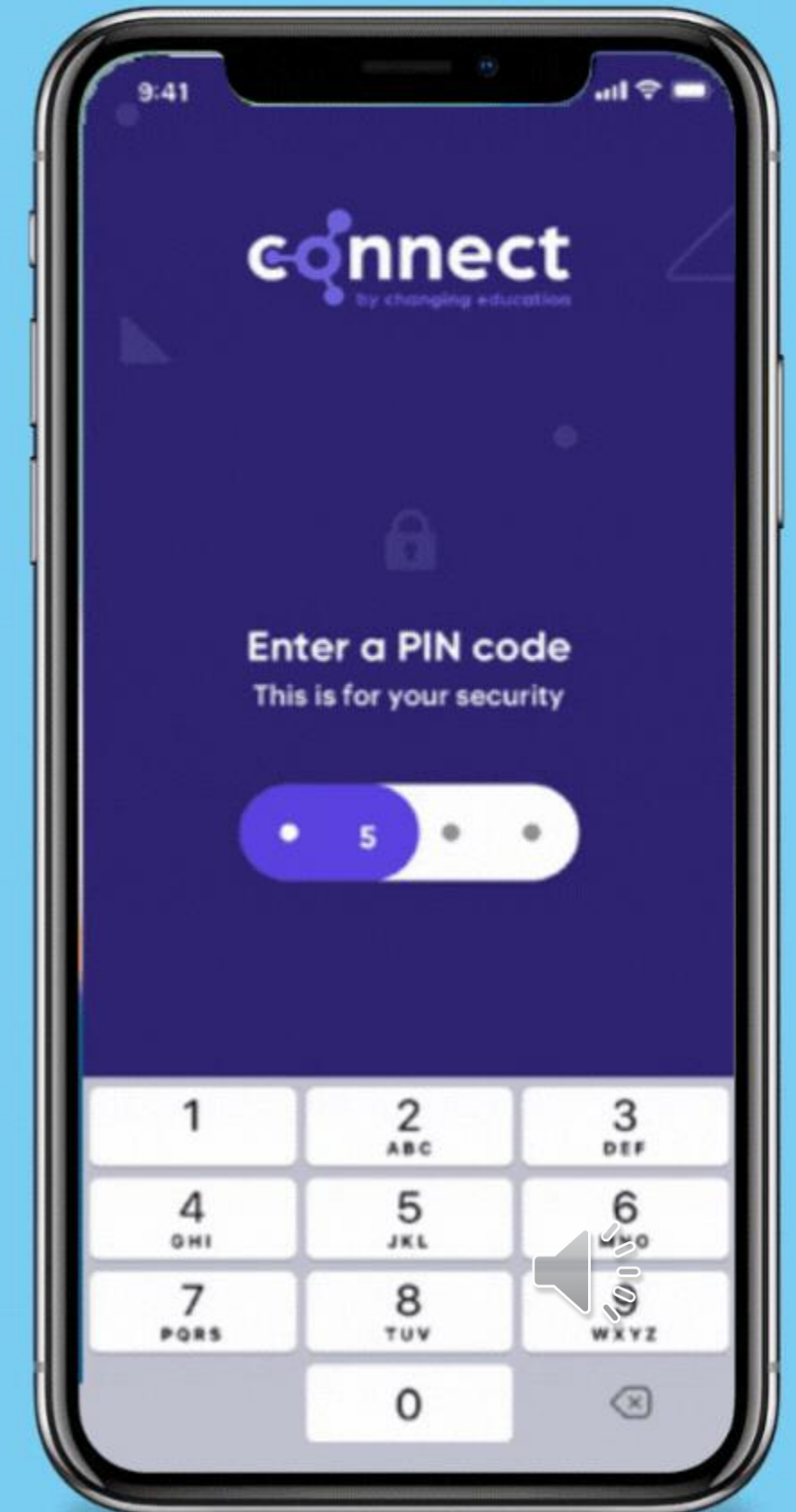
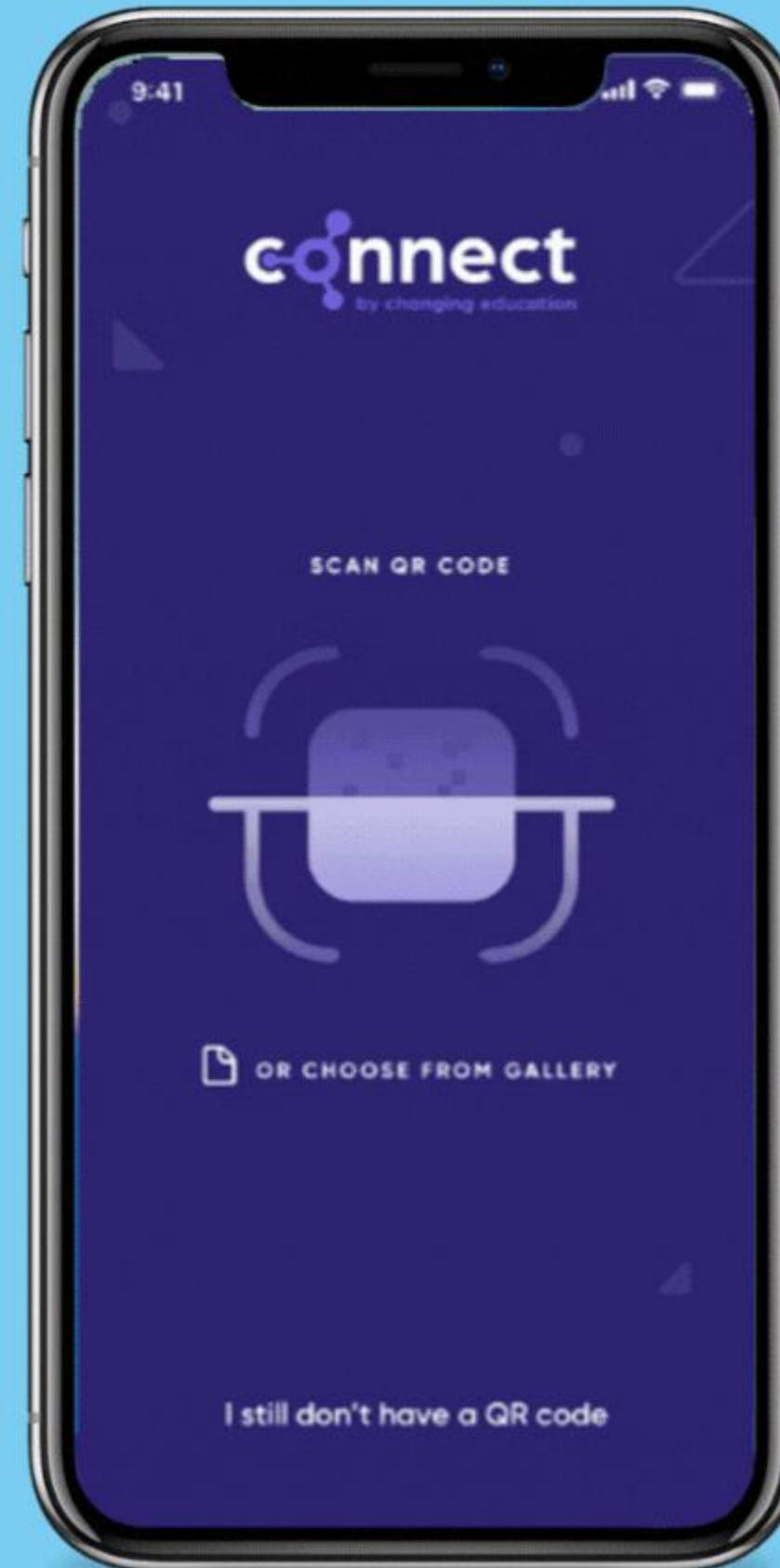
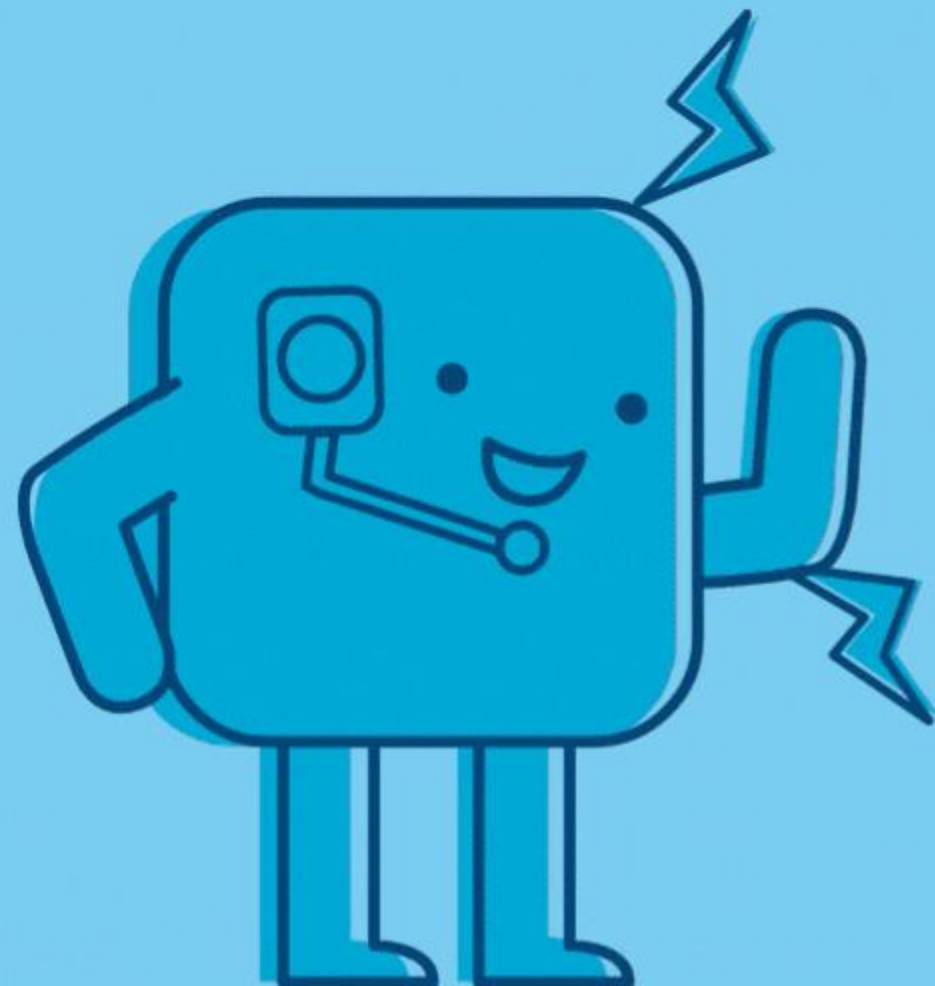
Type in Connect Placement Manager into your Apple or Google Play store and download the app. If you don't have access to a smartphone, your teacher can provide you an email link to an online portal.



Step 2: Log into the app



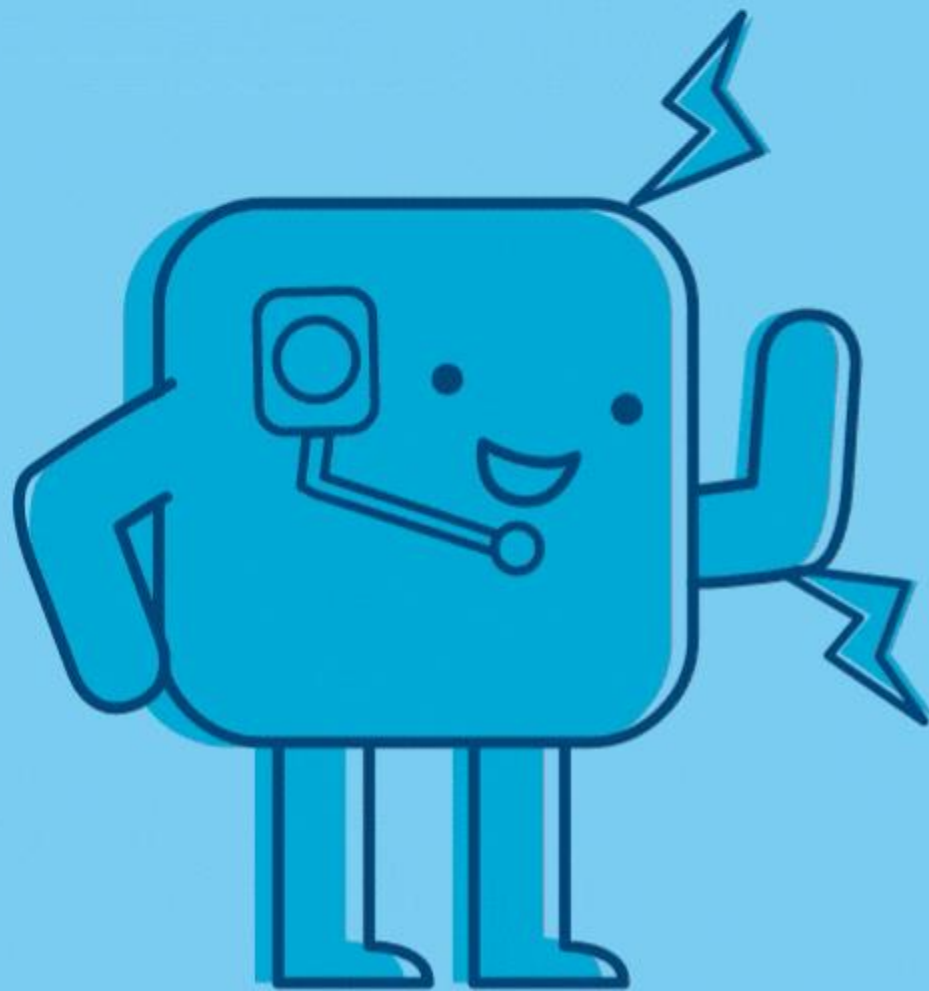
Scan your unique QR Code or click the link in your invite email and create your own password.



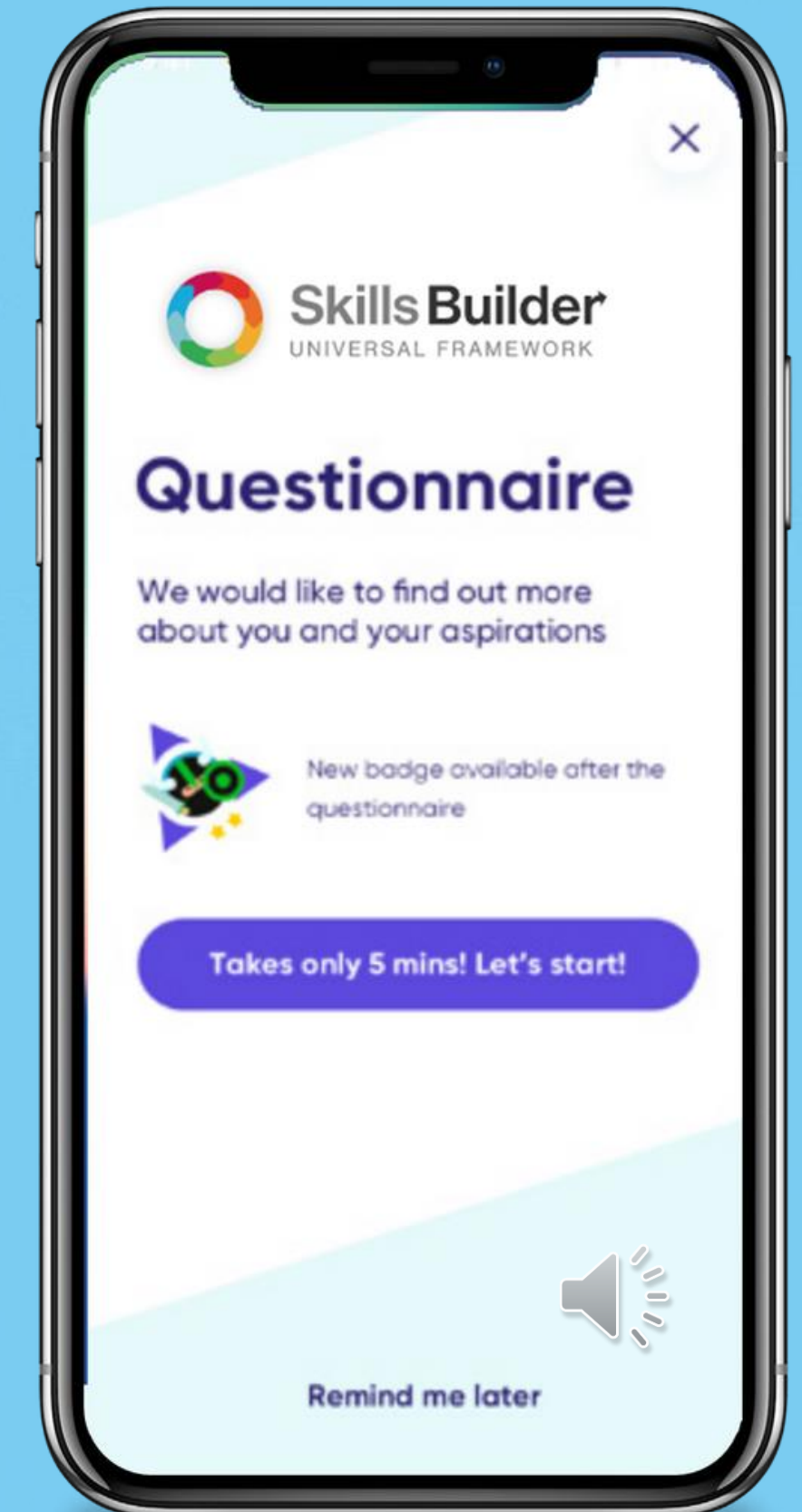
Step 4: Skills Builder



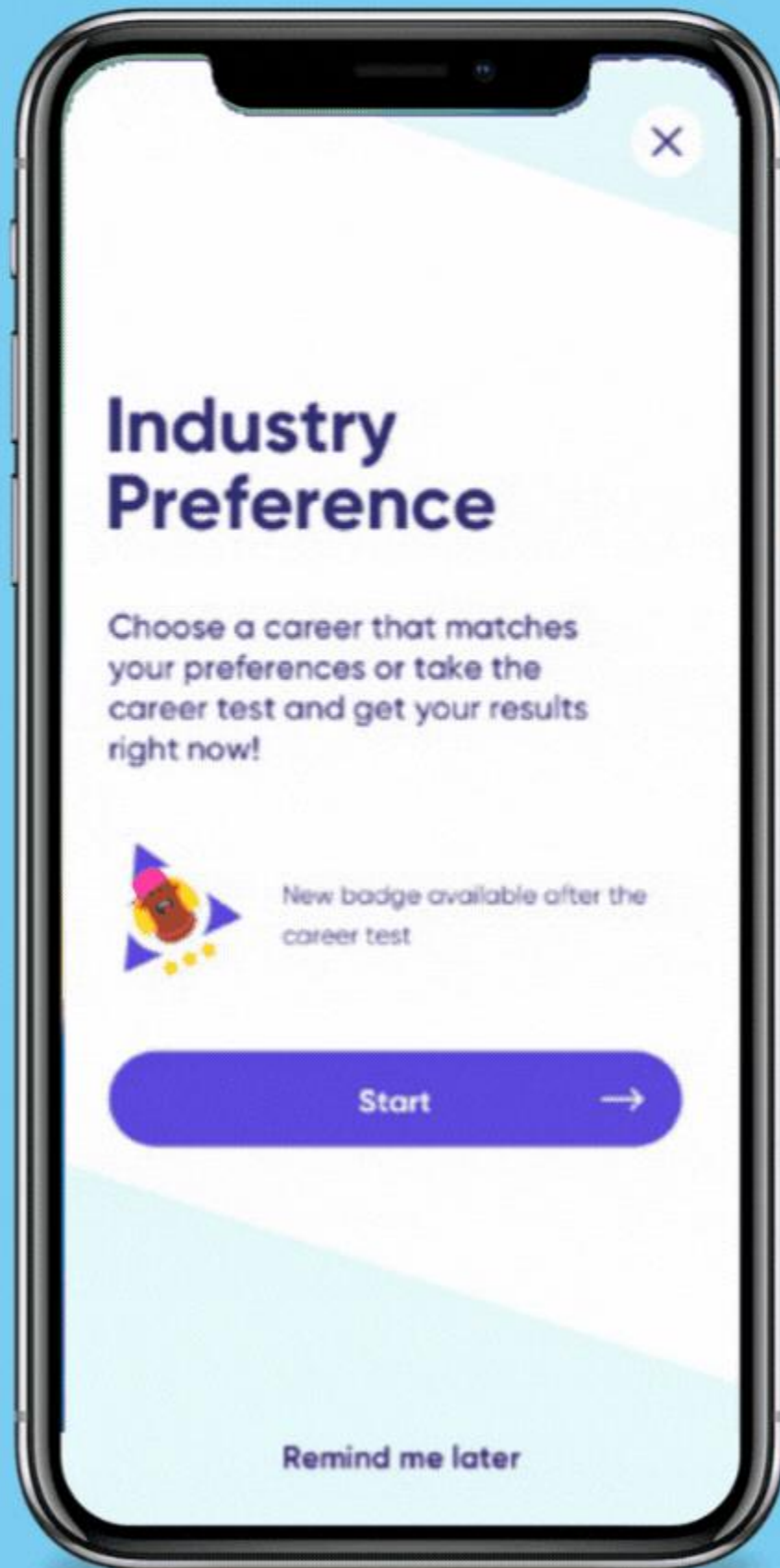
Our new Skills Builder tool will allow you to develop and reflect on your skills as an individual.



This is a key part in preparing you for your work placement as this tool will give you building blocks to improve your listening, speaking, problem solving, team working and many more skills before your placement starts.

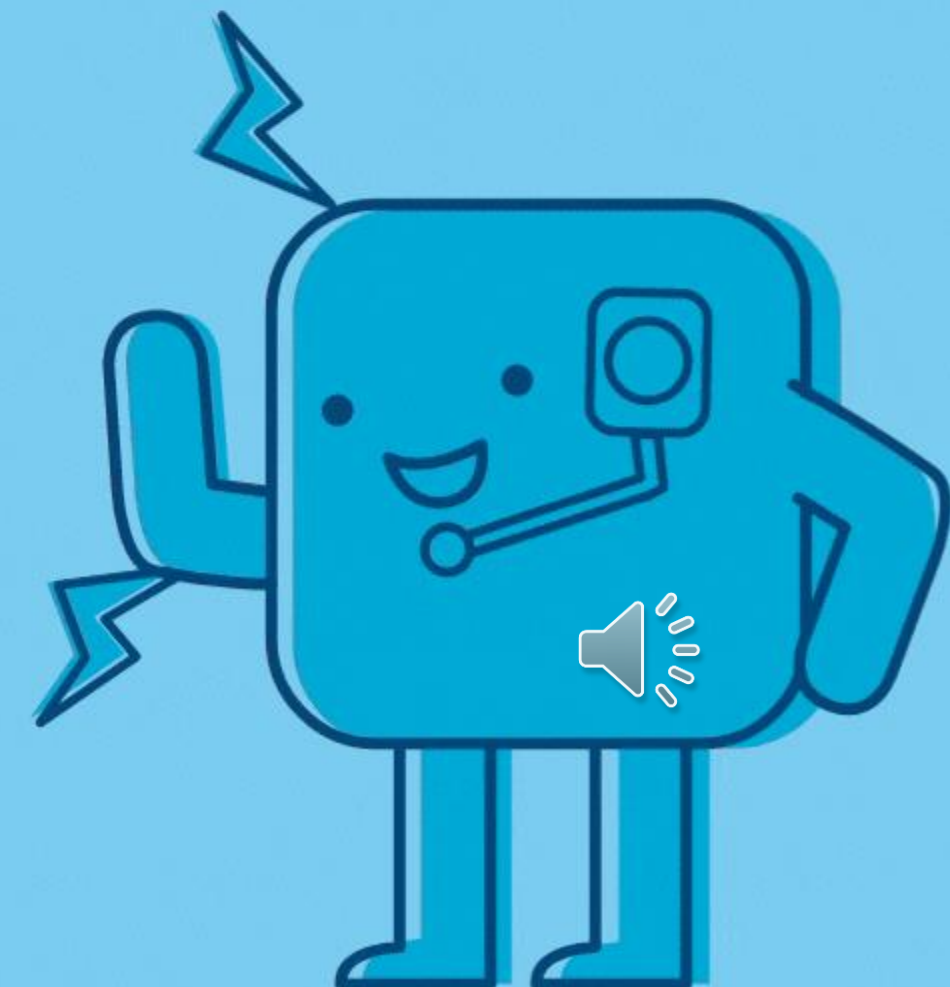


Step 3: Select your industry preference

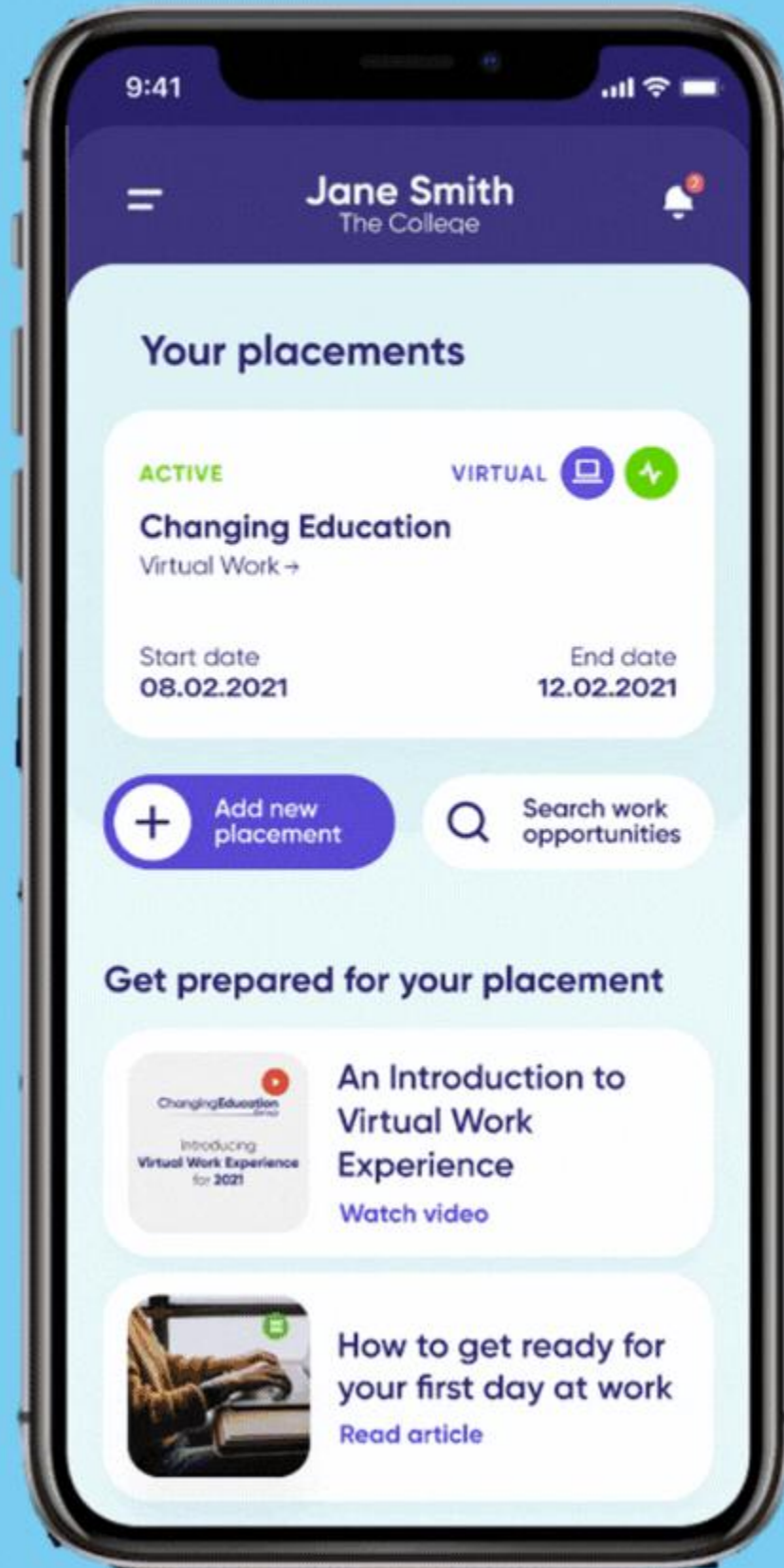


We prompt you to input your industry preferences to help school understand the career paths you are considering.

It is also helpful for you to log your industry preferences during the pre-placement phase to reflect back on post-placement to see if your preferences have changed or remained the same.

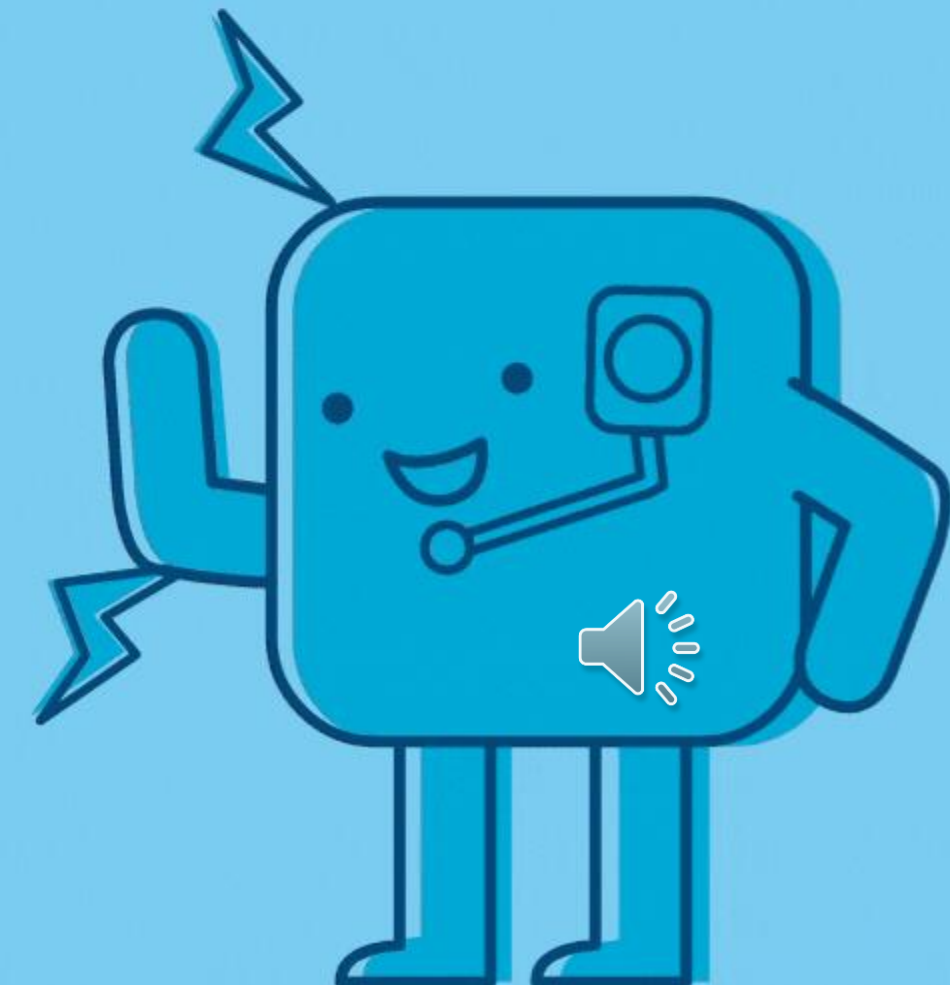


Step 5: Inputting your placement



Once you have found your own placement you will need to input the employer details into the app so that we can help the employer complete the risk assessment process.

You will need to input your self-found placement on the app at least **4 months** before your placement start date.

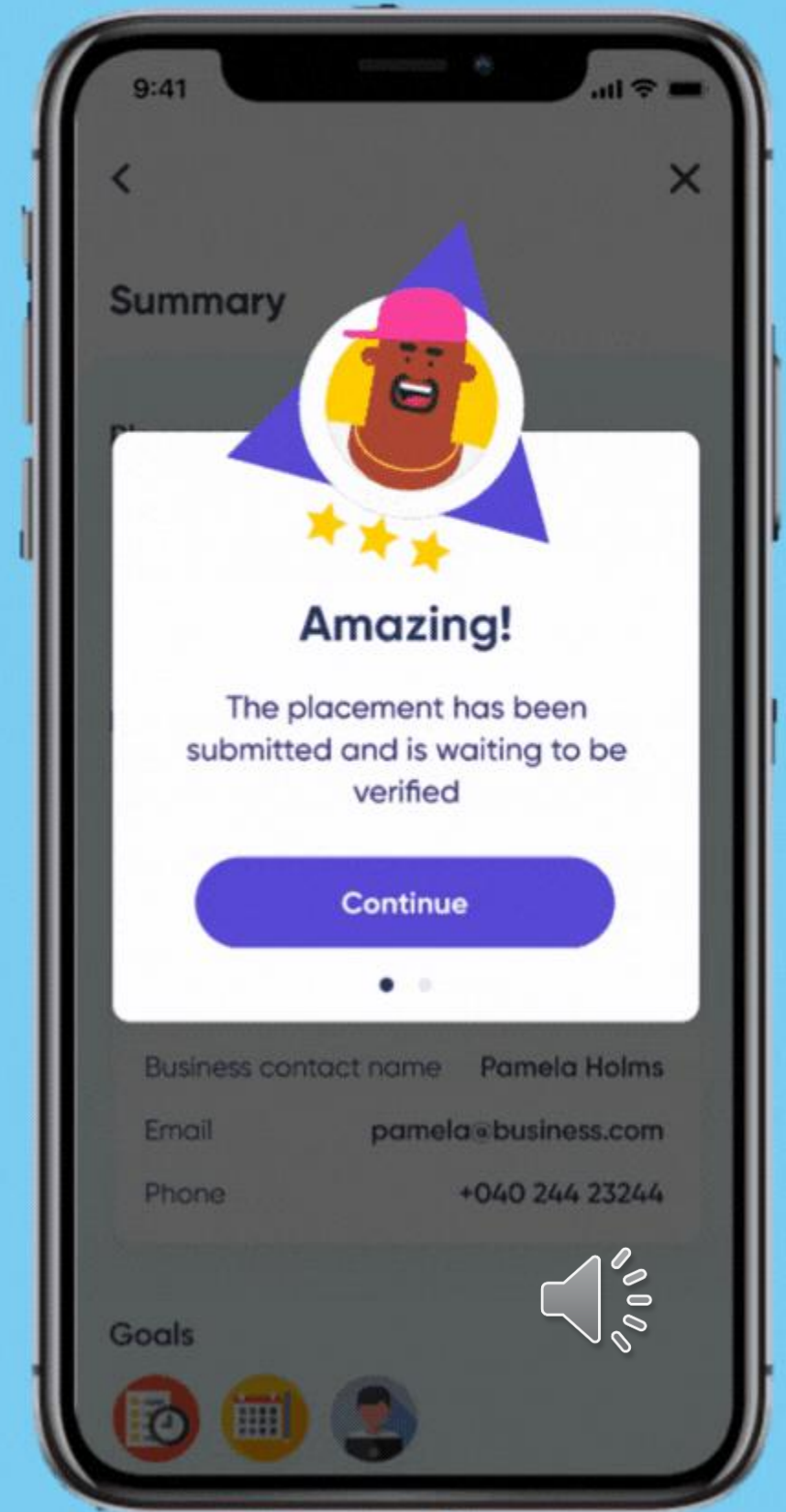
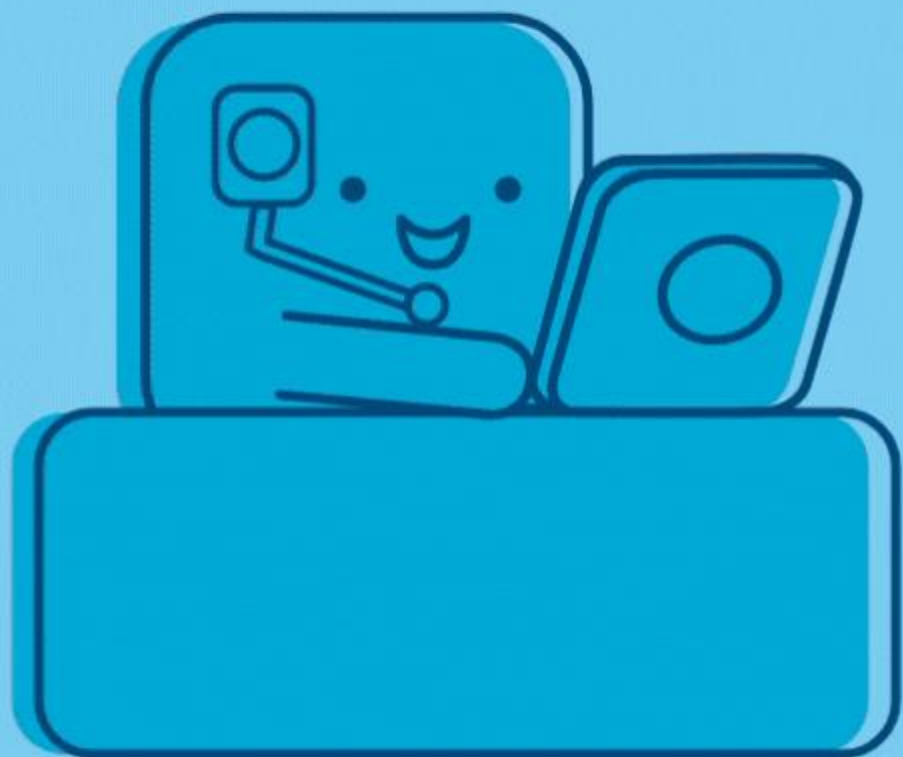


Step 6: Placement Verification



The teacher or staff member in charge of work experience at your school will then verify your placement based on whether they are satisfied with your chosen employer and their details.

If your placement is denied, there will be a comment from your school contact telling you why your placement is not suitable to go ahead.



Any Questions?

